

ONE42

Premium Offices and Retail



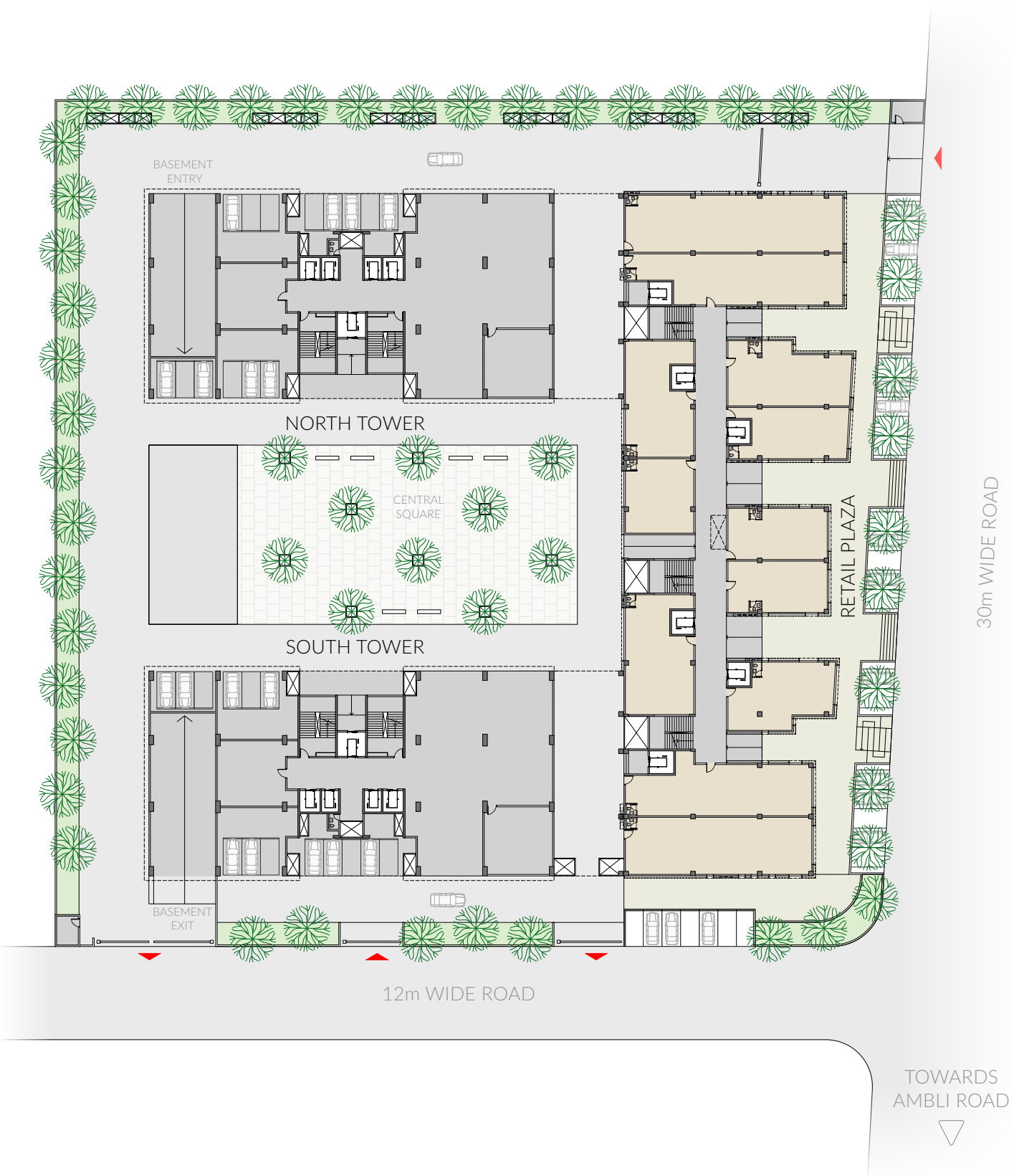
The premium commercial development will comprise two 12 storey office towers and a pedestrian friendly retail plaza, with a central square, smart parking and thoughtfully integrated services to create a thriving business community.



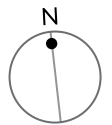
## Features

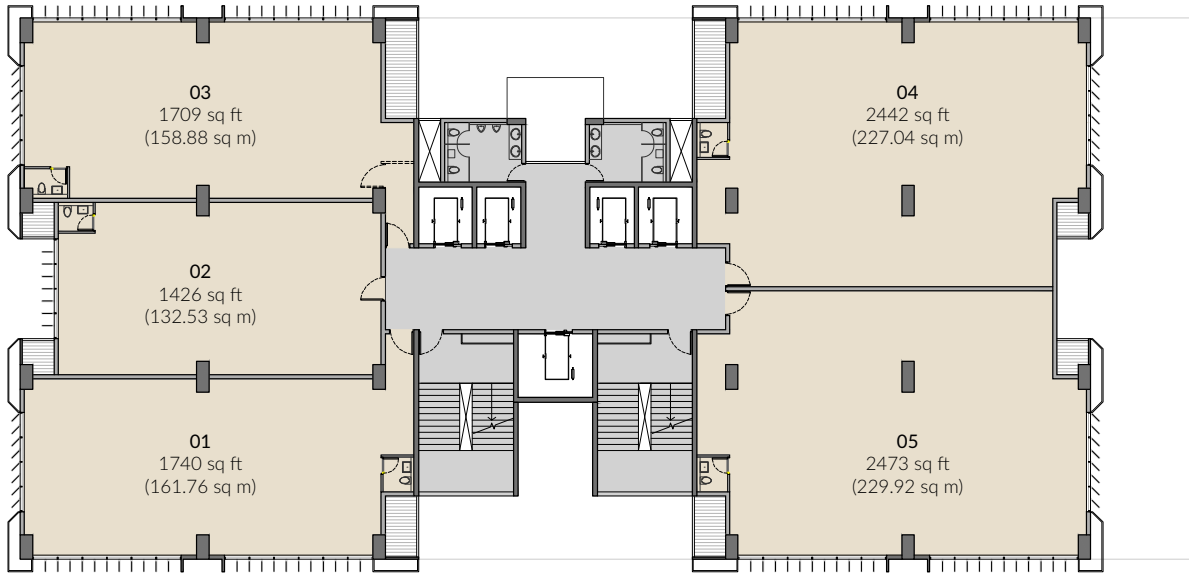
- Central square lined with trees - a place to relax and interact
- Common cafeteria and food services for the occupants
- Ample parking for occupants and visitors with two-tier mechanical system and dynamic parking solutions
- Common toilets in office towers with managed housekeeping
- Access-controlled elevators and parking areas
- Professionally managed and developer-supported property management services
- Eco-sensitive features in pursuit of IGBC Gold certification
- Smart building – ready for technology integration





SITE PLAN

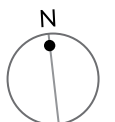
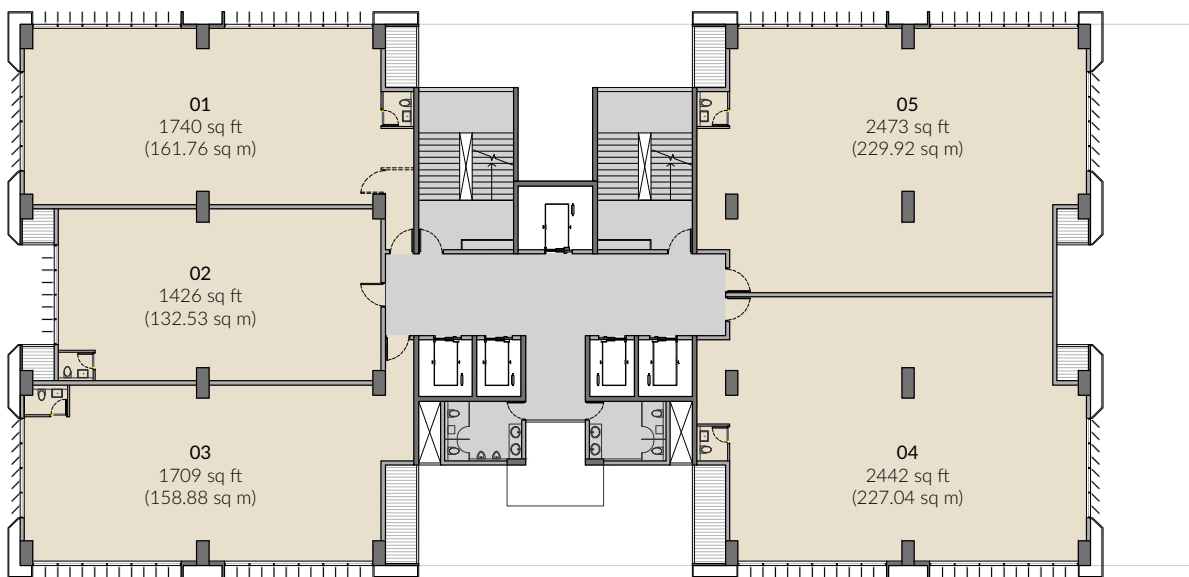


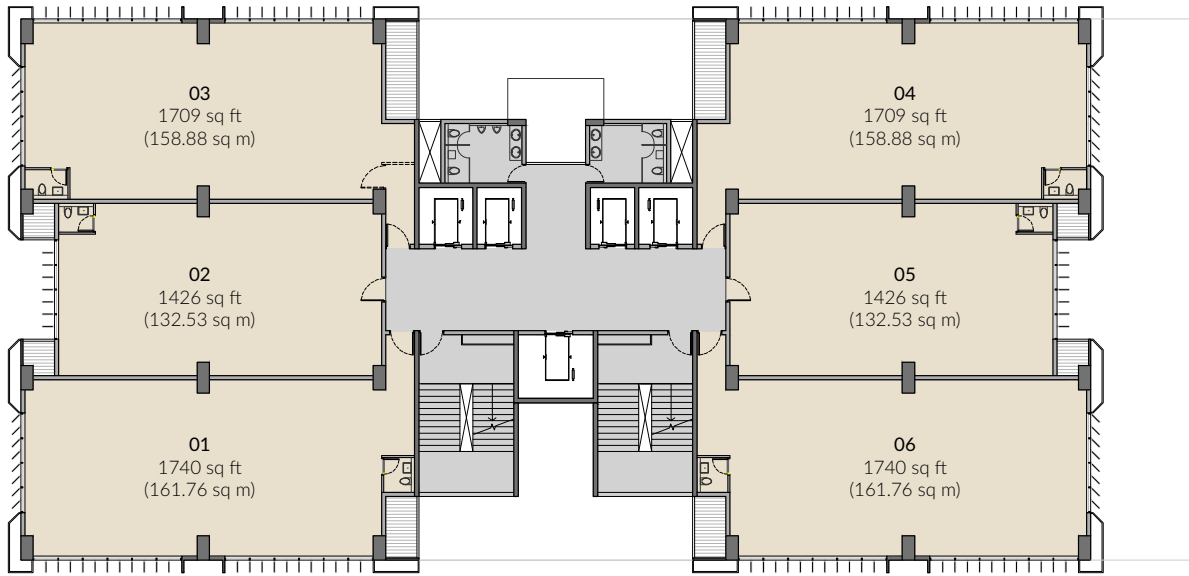


NORTH TOWER



SOUTH TOWER

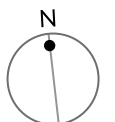
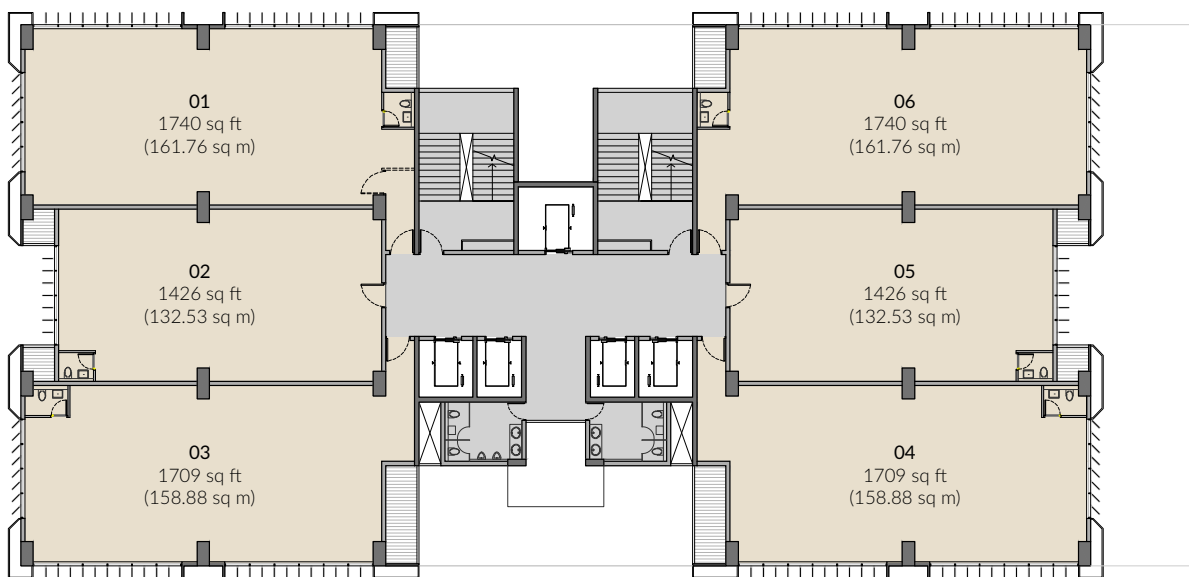


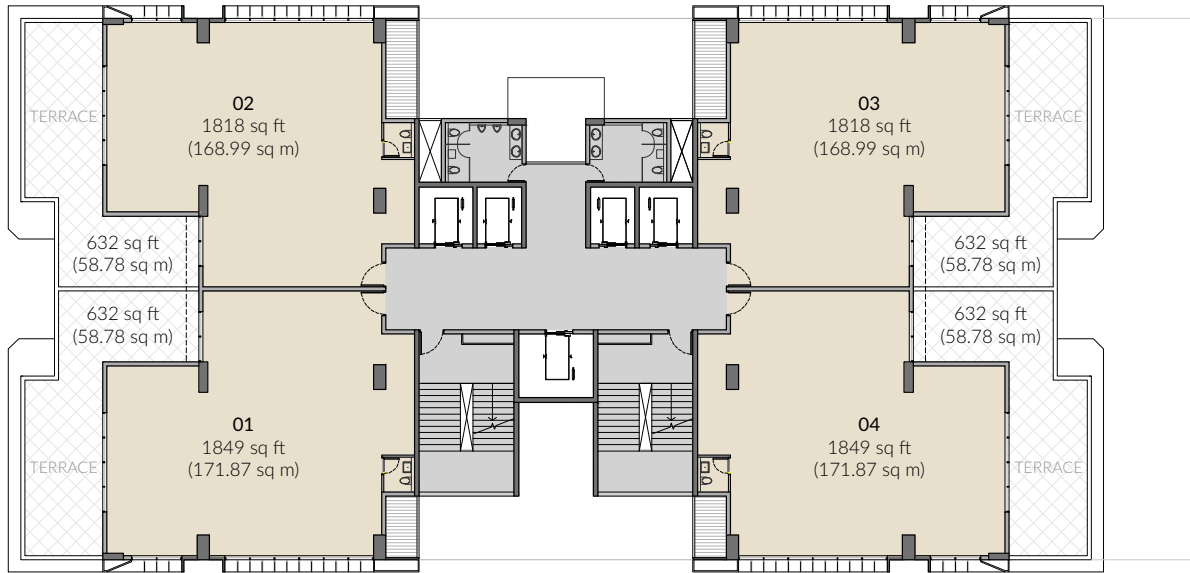


NORTH TOWER



SOUTH TOWER

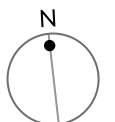
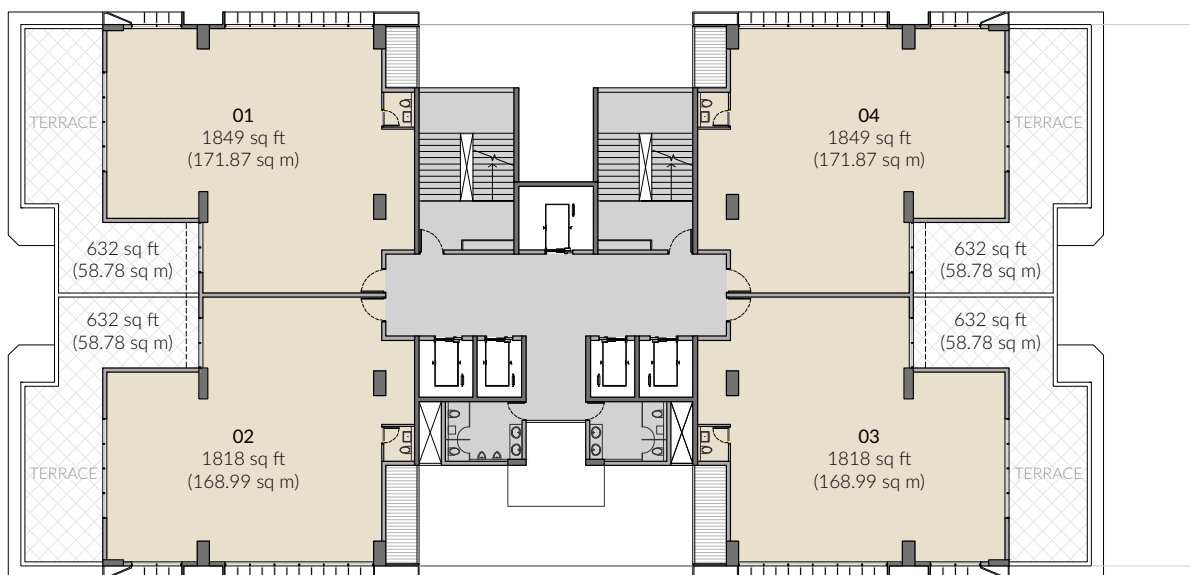




NORTH TOWER



SOUTH TOWER



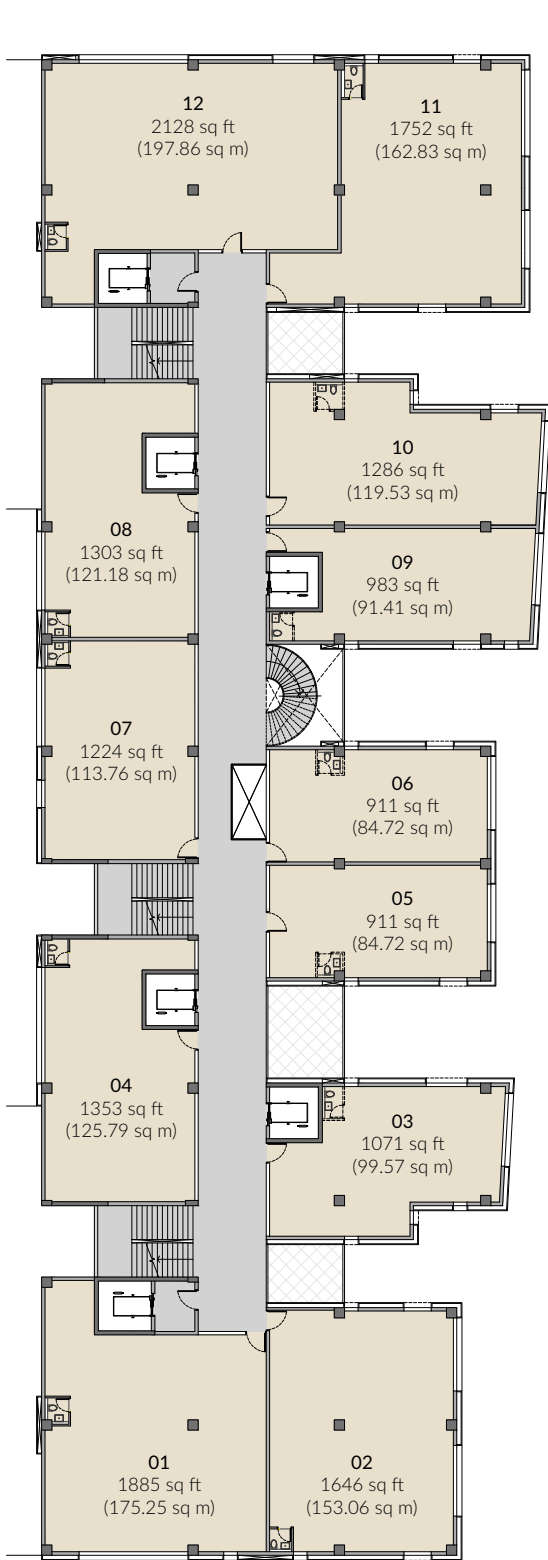




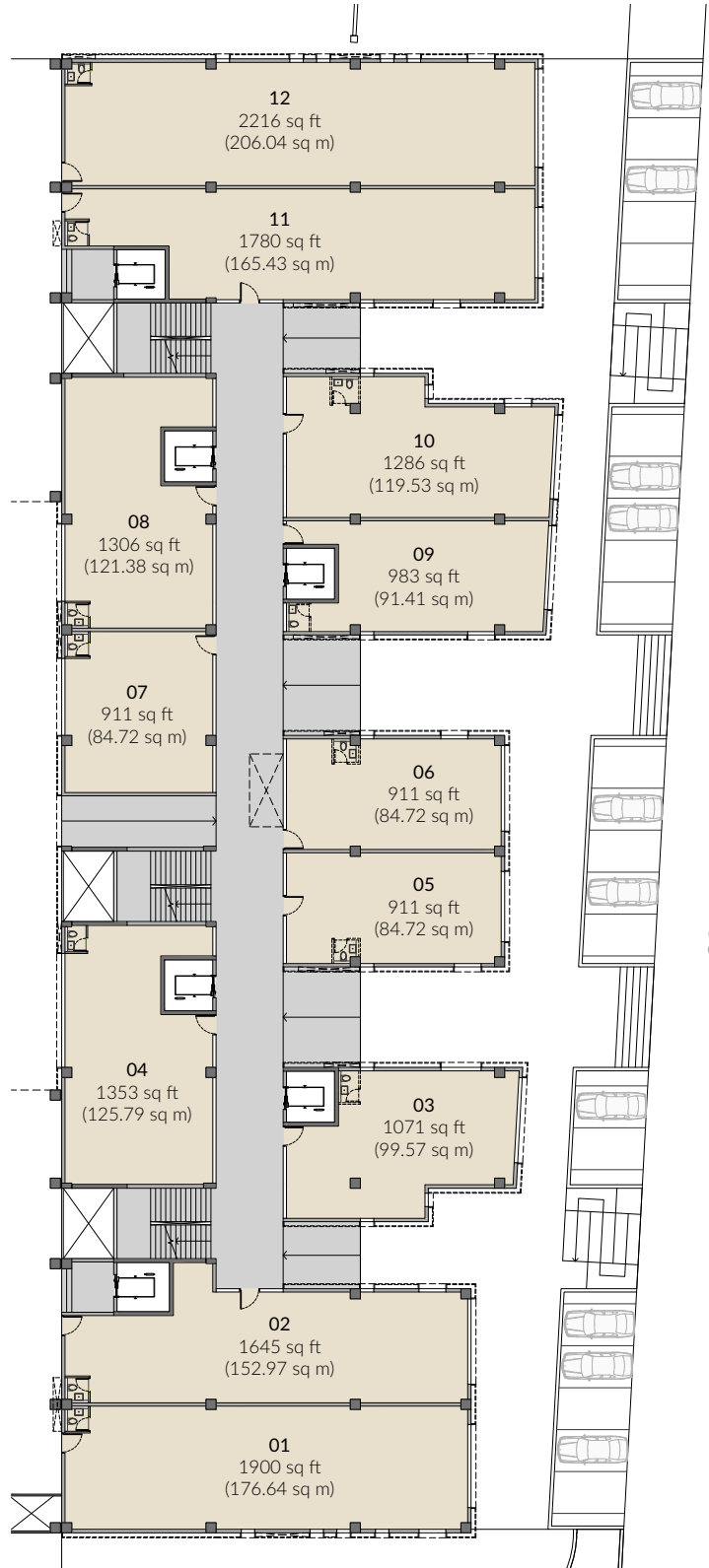
The Retail Plaza is designed and conceptualized to create a synergetic ecosystem of complementing lifestyle brands and restaurants, with a carefully curated mix of specialty food, exclusive cafes, furniture and lifestyle stores, clothing and accessory stores, art galleries among other boutique style retail stores, which carry forward a common theme and cater to a premium customer profile.

The combination of premium commercial and retail development promises to creates a vibrant character for the overall project.





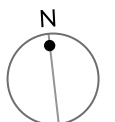
FIRST/SECOND FLOOR



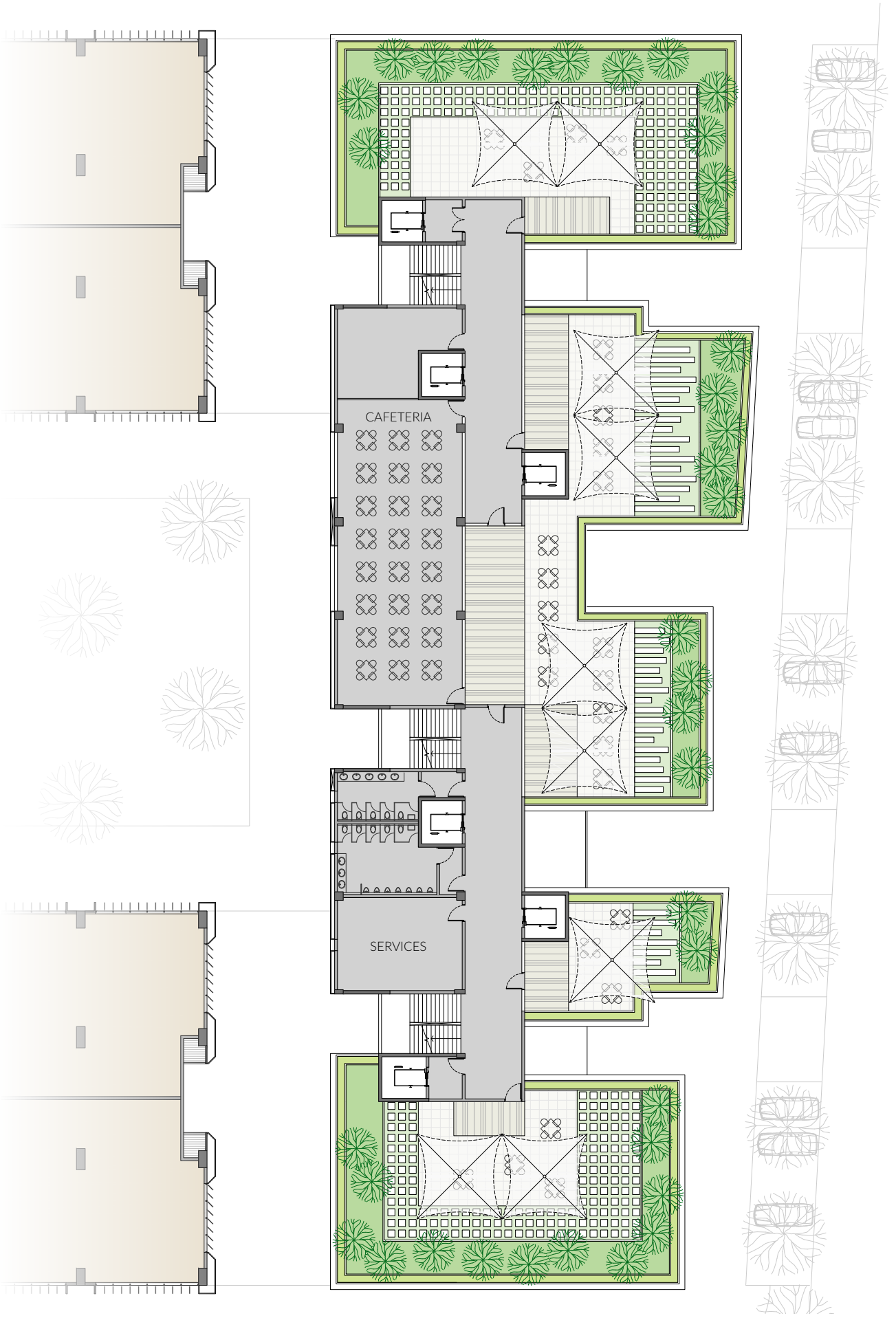
GROUND FLOOR

RETAIL PLAZA

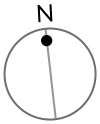
AREAS AS PER RERA

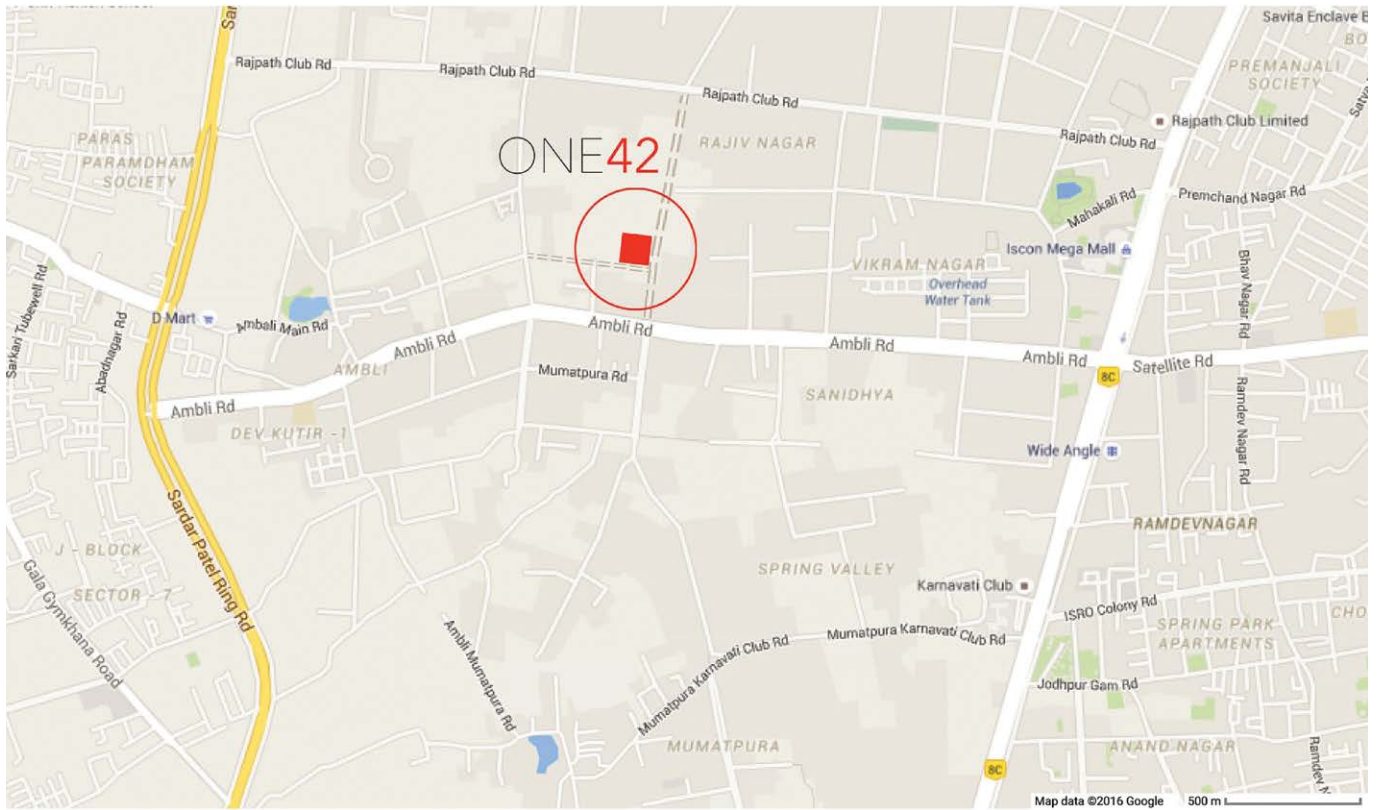


30m WIDE ROAD



COMMON TERRACE - CAFETERIA





ONE42, Off Ambli Road, Ahmedabad-380058

[View in Google Maps](#)

ONE42 is a project by Farpoint Properties LLP  
in partnership with AMAYA

**AMAYA**  
PROPERTIES LLP

+919825149229 | [info@amayaproperties.com](mailto:info@amayaproperties.com) | [www.amayaproperties.com](http://www.amayaproperties.com)

Plans, specifications and features subject to change.  
All images and drawings are indicative and may vary in the final implementation.

© AMAYA PROPERTIES LLP 2017